



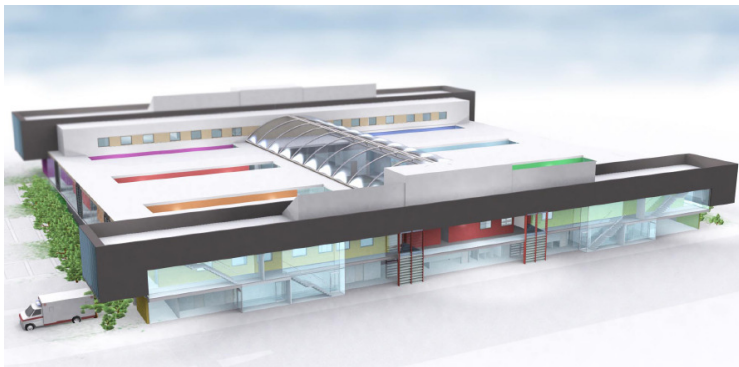
TASMANIA'S HEALTH PLAN

Integrated Care Centres

Integrated Care Centres (ICCs) are facilities which:

- Accommodate a range of health services that provide efficient, integrated care regardless of who funds, owns or provides each element of services;
- Operate under a philosophy which is less interventional and oriented towards care in the community rather than institutional care; and
- Provide greater certainty of access for clients because they focus on non-emergency services across the continuum of care.
- ICCs are expected to become 'hubs' for development of practical partnerships and collaborative models of care, to meet the unique needs of their communities.

Clarence



Legislation requires that projects with a capital value over \$5 million are submitted to the Parliamentary Standing Committee on Capital Works for assessment of need and public benefit. The Committee will meet to consider the facility proposal (pictured left) on 24 September 2009.

New models of care are being developed for diabetes, muscular skeletal/pain management, cardio-respiratory, women's and children's services, and Telehealth services.

A time limited Advisory Committee has been convened to oversee the establishment of the General Practice Super Clinic (GPSC) as a separate legal entity.

Launceston

Strategic partners in the development of the Launceston ICC (the Northern Area Health Service, University of Tasmania and GP North) are about to commence the detailed planning process that will result in building of a new facility, new partnerships and new ways of providing services.

Stage 1 of the Launceston ICC project, the renal dialysis satellite service to be developed at Kings Meadows Community Health Centre, is due for completion by December 2009. Stage 2, the main ICC facility, which is being constructed as part of the major re-development of the Launceston General Hospital site, is due to be completed at the end of 2010.

Glenorchy

A service planner has been engaged to develop a proposed service profile, models of care and ranking of services for inclusion in a proposed ICC.

At the same time, the Glenorchy City Council is investigating the redevelopment of the central Civic Centre for mixed, multi-purpose use, including a proposed ICC.

Kingston

Town planning consultants have been assessing the appropriateness of developing part of the Kingston High School site (the existing car park) for the new ICC. There is insufficient land in the existing John Street site to enable development of the size required to meet forecast local and regional needs.

Hobart

The development of the Hobart ICC is dependent on the redevelopment of the Royal Hobart Hospital. Planning will continue on a hospital redevelopment on its current site over an extended period and possibly supplemented by additional space on a nearby site.