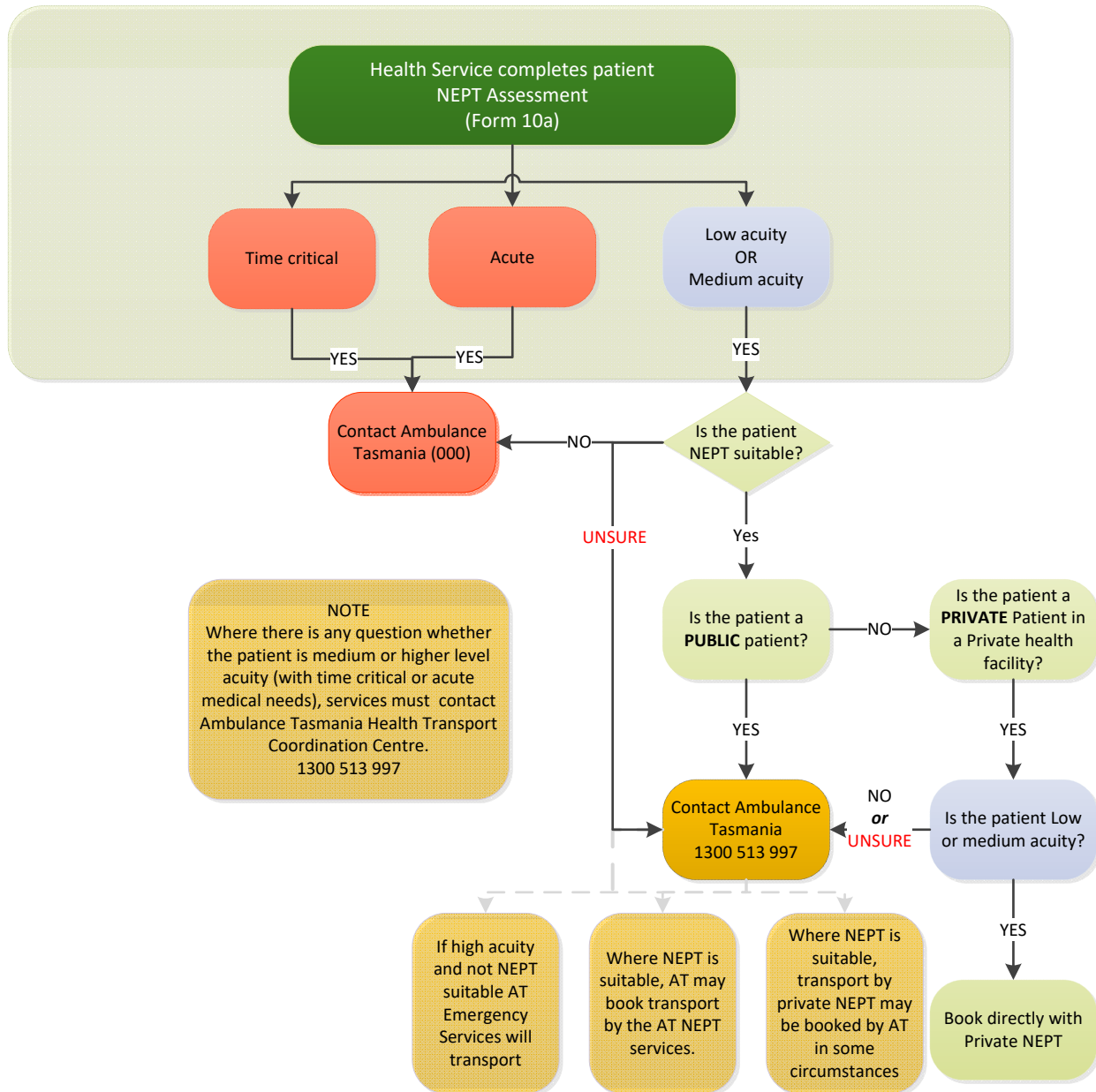


## NEPT Booking Flow Chart



### Definition

**Time-critical** : A person's medical needs are acute, require immediate medical attention and require an emergency response.

**Acute**: A person's medical needs or symptoms are a result of a severe injury, episode of illness or medical condition and require active but short term medical treatment or care.

**Low acuity**: The patient  
-is not a paediatric patient or medium acuity patient  
-has not had recent deteriorations in respiration rate as a result of a diagnosed disease.

**Medium acuity**: The patient  
-has not had recent deteriorations in respiration rate as a result of a diagnosed disease, **AND**  
-has been assessed as requiring a clinical escort, **OR**  
-is a paediatric patient 2-14 years, **OR**  
-requires oxygen therapy, if that therapy was established before being transported.